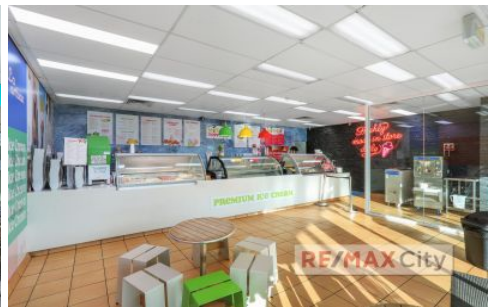


RE/MAX City



1060 Rochedale Road Springwood QLD

26 🚗

You are looking at a retail opportunity ideally located in a busy retail centre in heart of Springwood. Surrounded by Arndale Shopping Centre, Springwood Hotel, Dan Murphy's and McDonald's, making this lively precinct one of the most go-to destinations in the local area. Enquire now so you do not miss the chance to become a neighbour of the many national brands including Suncorp Bank, Subway, Zambrero and more.

- 95m2 NLA approx.
- Existing cold room, walk-in freezer and blast freezer
- Self contained with toilet and storage room
- Shop connected to grease trap
- Generous on-site customer parking
- Glass shop front offering ample natural light
- Awning & pylon signage ability providing excellent exposure

Price : CONTACT AGENT
Building Size : 95 sqm
View : <https://www.remaxcity.com.au/lease/qld/logan/springwood/commercial/retail/7977633>

RE/MAX
COMMERCIAL

Chris Esdale
07 3181 8888

<https://www.remaxcity.com.au>